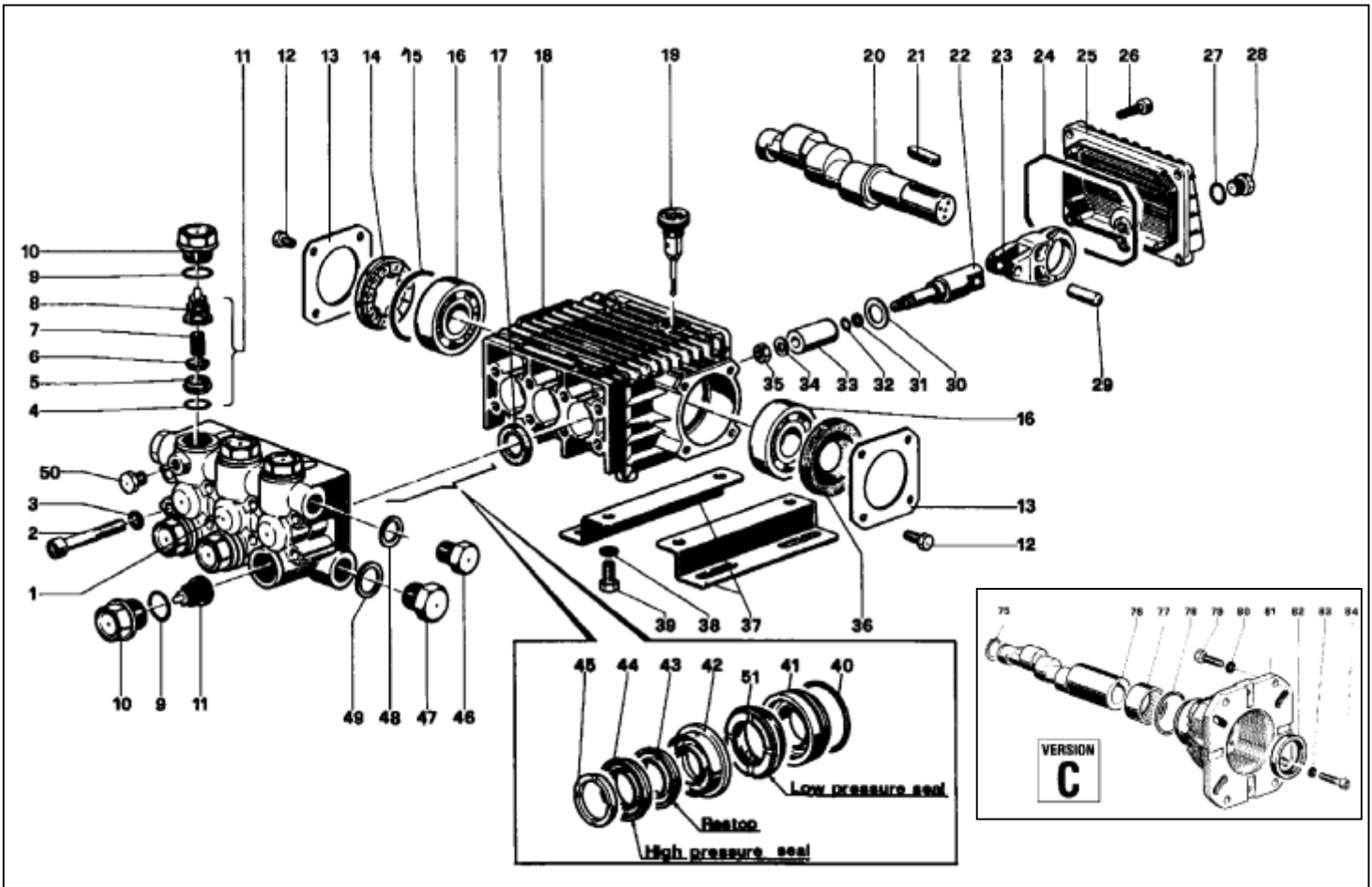


WW961C-WW962C



POS	REF	DESCRIPTION	KIT NO	QTY
1	44.1200.41	PUMP MANIFOLD (PISTON DIA 15)		1
2	99.3175.00	SCREW M8X60 UNI 5931		8
3	96.7014.00	WASHER		8
4	90.3841.00	O - RING DIA 17,13 X 2,62	KIT 123	6
5	36.2003.66	VALVE SEAT	KIT 123	6
6	36.2001.76	VALVE	KIT 123	6
7	94.7376.00	SPRING DIA 9,4 X 14,8	KIT 123	6
8	36.2025.51	VALVE GUIDE	KIT 123	6
9	90.3847.00	O - RING DIA 20,24 X 2,62	KIT 124	6
10	98.2226.00	CAP M 24 X 1,5 X 17	KIT 124	6
11	36.7115.01	VALVE UNIT	KIT 123	6
12	99.1807.00	SCREW M6 X 10 UNI 5739		8
13	50.1500.74	CRANKCASE COVER		2
14	44.2118.01	SPACER INDICATOR		1
15	90.4097.00	O - RING DIA 55,56 X 3,53		1
16	91.8328.00	BALL BEARING - 6305		2
17	90.1614.00	OIL SEAL DIA 20 X 30 X 5	KIT 23	3
18	44.0100.22	CRANKCASE		1
19	98.2103.00	OIL DIPSTICK G3/8		1
21	91.4892.00	KEY		3
22	44.0500.66	PISTON GUIDE		3
23	44.0300.22	CONNECTING ROD		3
24	90.3920.00	O - RING DIA 101,27X 2,62		1
25	44.1600.22	REAR COVER		1
26	99.1837.00	SCREW M6X14 UNI 5931		5
27	90.3585.00	O - RING DIA 10,82 X 1,78		1
28	98.2041.00	CAP G 1/4 X 9		1
29	97.7340.00	PISTON PIN DIA 10 X 29,5		3
30	96.7350.00	WASHER DIA 16 X 27		3
31	90.5022.00	ANTI-EXTRUSION RING		3
32	90.3572.00	O - RING DIA 5,28 X 1,78 - SPEC		3

POS	REF	DESCRIPTION	KIT NO	QTY
33	52.0400.09	PISTON DIA 15		3
34	96.7008.00	WASHER DIA 8		3
35	92.2216.00	NUT M8 - STAINLESS STEEL		3
36	90.1641.00	OIL SEAL DIA 25 X 62 X10		1
37	50.2000.74	PUMP MOUNTING FEET		2
38	96.7016.00	WASHER DIA 8 UNI 1751		4
39	99.3037.00	SCREW M8 X 16 UNI 5739		4
40	90.3612.00	O - RING DIA 31,47 X 1,78	KIT 125-126-130-131	3
41	44.0800.70	PACKING RETAINER DIA 15	KIT 125-130	3
42	52.2166.70	INTERMEDIATE RING DIA 15	KIT 89-130	3
43	90.2622.00	BACKING SEAL DIA 15	KIT 88-130	3
44	90.2620.00	PACKING DIA 15 H.P. SEAL	KIT 88-130	3
45	51.1000.51	HEAD RING DIA 15	KIT 90-130	3
46	98.2100.00	CAP G 3/8 X 13		1
47	98.2176.00	CAP G 1/2 X 10		1
48	96.7380.00	WASHER DIA 17,5 X 23 X 1,5		1
49	96.7514.00	WASHER DIA 21,5 X 27 X 1,5		1
50	98.1966.00	CAP G 1/8 X 8		1
51	90.2617.00	LOW PRESSURE SEAL DIA 15	KIT 88-130	3
75	90.0635.00	CRANKCASE CIRCLIP		1
76	44.0209.65	CRANKSHAFT WW961		1
76	44.0212.65	CRANKSHAFT WW962		1
77	91.8568.00	NEEDLE BEARING		1
78	90.4097.00	O - RING DIA 55,56 X 3,53		1
79	99.2755.00	SCREW 5/16 X 1" UNF		4
79	99.3345.00	SCREW 3/8 X 1" UNC		4
80	96.7020.00	WASHER DIA 8 UNI 1736		4
80	96.7104.00	WASHER DIA 10		4
81	10.0518.22	MOTOR FLANGE (PETROL)		1
82	90.1690.00	OIL SEAL DIA 45 X 62 X 8		1
83	96.6938.00	WASHER DIA 6		4
84	99.1912.00	SCREW M6X30 UNI 5931		4

SERVICE REPAIR KITS AVAILABLE:

KIT NO	KIT 23	KIT 123	KIT 124	KIT NO	KIT 88	KIT 89	KIT 90	KIT 125	KIT 130
POSITIONS INCLUDED	17	4-5-6 7-8 (11)	9-10	POSITIONS INCLUDED	43-44-51	42	45	40-41	40-41-42- 43-44-45- 51
No pcs.	3	6	6	N. PCS	3	3	6	3	1