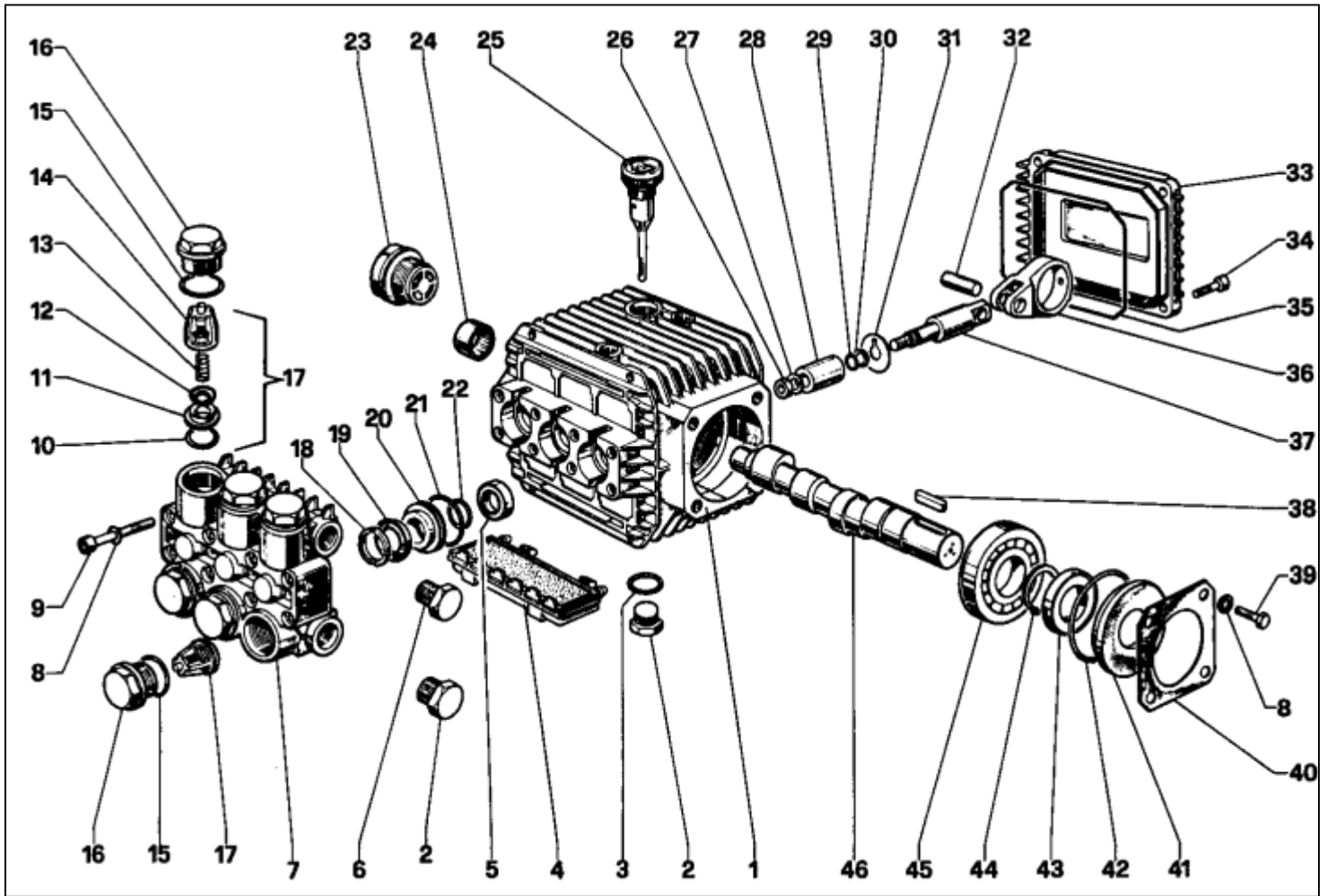


WW90V-WW94V

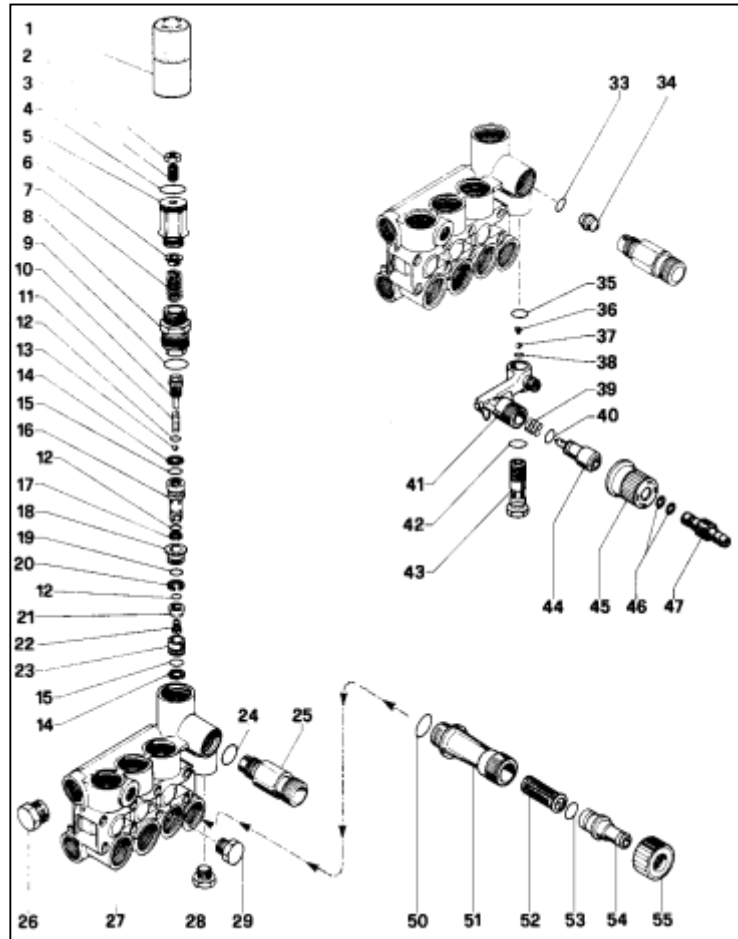


POS	REF	DESCRIPTION	KIT NO	QTY
1	51.0106.22	CRANKCASE		1
2	98.2100.00	CAP G 3/8 X 13		2
3	90.3833.00	O-RING Ø 13.95 X 2.62		1
4	51.2090.51	PROTECTION COVER		1
5	90.1565.00	OIL SEAL Ø 15 X 24 X 5	KIT 83	3
6	98.2041.00	CAP G1/4 X 9		1
7		SEE PAGE 2/2		
8	96.6938.00	WASHER Ø 6.4		12
9	99.1943.00	SCREW M6 X 40 UNI 5931		8
10	90.3841.00	O-RING Ø 17.13 X 2.62	KIT 1	6
11	36.2003.66	VALVE SEAT	KIT 1	6
12	36.2001.76	VALVE	KIT 1	6
13	94.7376.00	SPRING Ø 9.4 X 14.8	KIT 1	6
14	36.2002.51	VALVE GUIDE	KIT 1	6
15	90.3847.00	O-RING Ø 20.24 X 2.62	KIT 84	6
16	98.2218.00	CAP M 24 X 1.5	KIT 84	6
17	36.7032.01	VALVE UNIT	KIT 1	6
18	51.1000.51	HEAD RING Ø 15	KIT 96-97	3
19	90.2620.00	PACKING Ø 15	KIT 96-97	3
20	51.0800.70	PACKING RETAINER Ø 15	KIT 86-96	3
21	90.3604.00	O-RING Ø 25.12 X 1.78	KIT 86-96-97	3
22	90.3835.00	O-RING Ø 15.08 X 2.62	KIT 86-96-97	3
23	97.5968.00	OIL LEVEL INDICATOR G3/4		1
24	91.8014.00	BEARING RACE		1

POS	REF	DESCRIPTION	KIT NO	QTY
25	99.2103.00	OIL DIPSTICK G 3/8		1
26	99.2216.00	NUT M8 SS		3
27	96.7008.00	WASHER Ø 8		3
28	51.0400.09	PISTON Ø 15		3
29	90.3572.00	O-RING Ø 5.28 X 1.78		3
30	90.5022.00	ANTI-EXTRUSION RING		3
31	96.7070.00	WASHER Ø 9		3
32	97.7310.00	PISTON PIN Ø 8 X 24.5		3
33	51.1600.22	CRANKCASE COVER		1
34	99.1687.00	SCREW M6 X 18 - UNI 5931		4
35	90.3917.00	O-RING Ø 88.57 X 2.62		1
36	51.0300.22	CONNECTING ROD		3
37	51.0500.56	PISTON GUIDE		3
38	91.4878.00	KEY		1
39	99.1807.00	SCREW M6 X 10 UNI 5739		4
40	50.1500.74	CRANKCASE COVER		1
41	50.2115.51	SPACER		1
42	90.4097.00	O-RING Ø 55.6 X 3.53		1
43	90.1634.00	OIL SEAL Ø 25 X 42 X 7		1
44	90.0635.00	CIRCLIP CRANKSHAFT		1
45	91.8328.00	BALL BEARING 6305		1
46	51.0200.35	CRANKSHAFT WW90V		1
46	51.0204.35	CRANKSHAFT WW94V		1

SERVICE REPAIR KITS AVAILABLE:

KIT NO	KIT 1	KIT 83	KIT 84	KIT 86	KIT 96	KIT 97
POSITIONS INCLUDED	10-11-12 13-14 (17)	5	15-16	20-21-22	18-19-20 21-22	18-19-21 22
No pcs.	6	3	6	3	1	3



POS	REF	DESCRIPTION	KIT NO	QTY
1	36.3187.51	KNOB		1
2	92.2218.00	NUT M8 UNI 5923		1
3	99.3054.00	SCREW M8 X 20 UNI 5923		1
4	90.3598.00	O-RING Ø 20,35 X 1,78		1
5	36.3185.70	PRESSURE ADJUSTMENT		1
6	36.3169.70	CAP		1
7	94.7436.00	SPRING Ø 15 X 35		1
8	36.3184.70	BUSH GUIDE	KIT 102	1
9	90.3847.00	O-RING Ø 20,24 X 2,62	KIT 102	1
10	36.3188.70	SCREW ADJUSTER	KIT 102	1
11	94.7332.00	SPRING Ø 6,1 X 19	KIT 102	1
12	90.3575.00	O-RING 6,75 X 1,78	KIT 102	3
13	97.4800.00	BALL Ø 9/32"	KIT 102	1
14	19.5065.00	ANTI-EXTRUSION RING	KIT 102	2
15	90.3822.00	O-RING Ø 9,92 X 2,62	KIT 102	2
16	36.3189.70	PISTON	KIT 102	1
17	90.5025.00	ANTI-EXTRUSION RING	KIT 102	1
18	36.3165.70	VALVE GUIDE	KIT 102	1
19	90.3589.00	O-RING Ø 12,42 X 1,78	KIT 102	1
20	90.5075.00	ANTI-EXTRUSION RING	KIT 102	1
21	36.3190.66	VALVE SET	KIT 102	1
22	99.1509.00	SCREW M5 X 0,8 X 7,5	KIT 102	1
23	36.3164.66	VALVE SEAT	KIT 102	1
24	90.3832.00	O-RING Ø 13,95 X 2,62	KIT 94	1
25	10.0147.70	NIPPLE M22 X 1,5 Ø 3		1
26	98.2041.00	PLUG G1/4 X 9		1
27	51.1201.41	CYLINDER HEAD OT58 - BRASS		1
28	98.2057.00	CAP M1/4 X 1,5		1
29	98.2041.00	CAP G1/4 X 9		1

POS	REF	DESCRIPTION	KIT NO	QTY
33	90.3822.00	O-RING Ø 9,92 X 2,62	KIT 94	1
34	10.0151.66	NOZZLE Ø 2 (8 -11 L/MIN)		1
34	10.0076.66	NOZZLE Ø 2,2 (12-15 I/MIN)		1
35	90.3582.00	O-RING Ø 9,25 X 1,78	KIT 94	1
36	94.8217.00	SPRING Ø 4,3/7,3 X 11	KIT 94	1
37	97.4782.00	BALL Ø 7/32"	KIT 94	1
38	90.3572.00	O-RING Ø 5,28 X 1,78	KIT 94	1
39	94.7383.00	SPRING Ø 9,75 X 10	KIT 94	1
40	90.3580.00	O-RING Ø 8,73 X 1,78	KIT 94	1
41	36.3181.51	BODY		1
42	90.3585.00	O-RING Ø 10,82 X 1,78	KIT 94	1
43	36.2563.70	VALVE SEAT		1
44	36.2564.70	SHUTTER		1
45	36.2565.51	KNOB		1
46	90.3570.00	O-RING Ø 4,48 X 1,78	KIT 94	2
47	36.2566.70	CHEMICAL BASE CONNECTION		1
50	90.3841.00	O-RING Ø 17,13 X 2,62		1
51	36.3182.51	NIPPLE G 3/4		1
52	92.8925.00	FILTER		1
53	90.3828.00	O-RING Ø 12,37 X 2,62		1
54	36.2569.70	WATER INLET FITTING		1
55	92.9828.00	RING NUT G3/4		1

SERVICE REPAIR KITS AVAILABLE:

	KIT NO	KIT 94	KIT 102
			8-9-10
POSITIONS INCLUDED	24-33-35 36-37-38 39-40-42 46	11-12-13 14-15-16 17-18-19 20-21-22 23	
No pcs.	1-2	1-3	