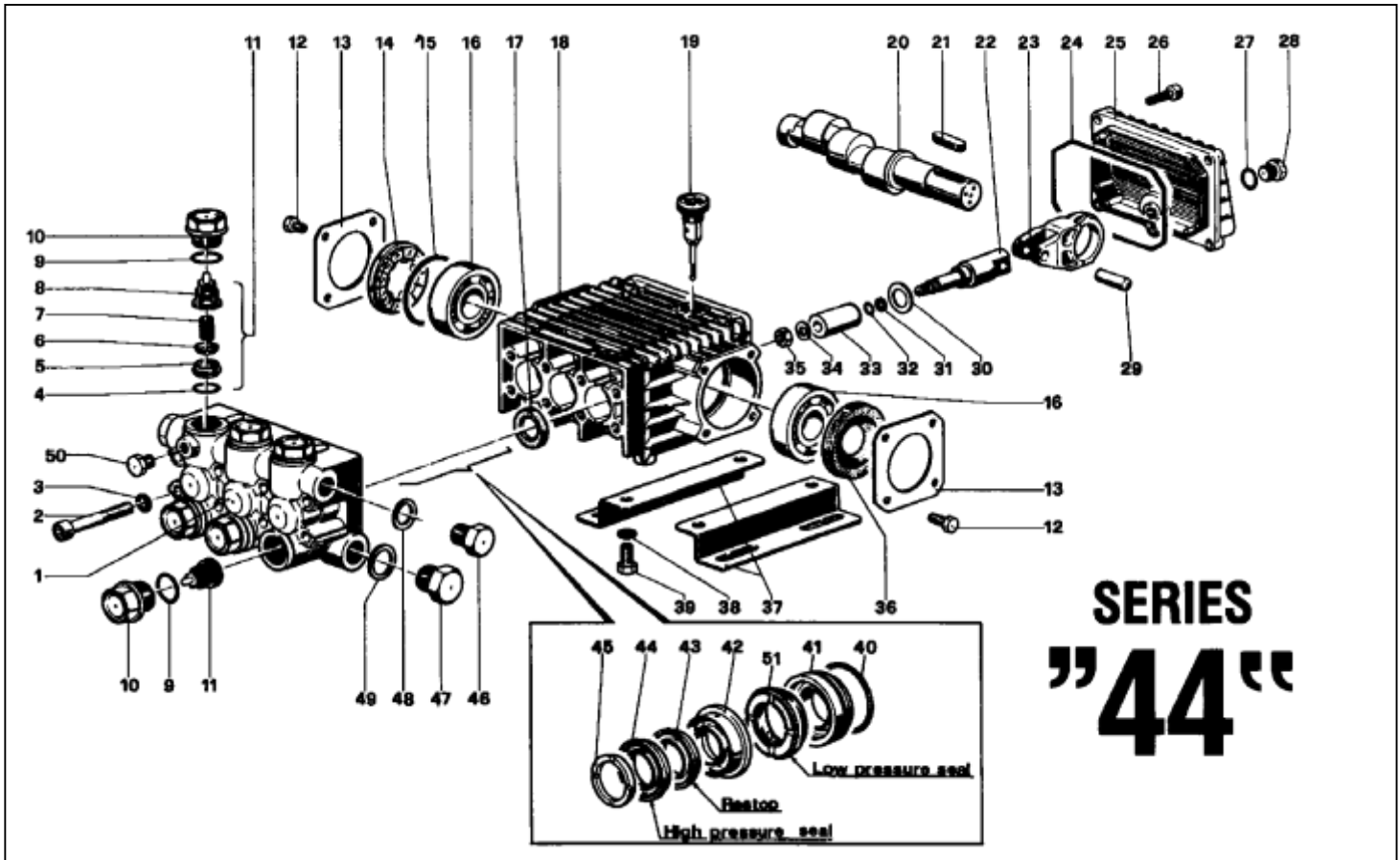


W112B-W140B-W154B



SERIES "44"

| POS | REF | DESCRIPTION | KIT NO | QTY |
|-----|------------|-------------------------------|---------|-----|
| 1 | 44.1204.41 | PUMP MANIFOLD (PISTON DIA 18) | | 1 |
| 2 | 99.3175.00 | SCREW M8X60 UNI 5931 | | 8 |
| 3 | 96.7014.00 | WASHER | | 8 |
| 4 | 90.3841.00 | O - RING DIA 17,13 X 2,62 | KIT 123 | 6 |
| 5 | 36.2003.66 | VALVE SEAT | KIT 123 | 6 |
| 6 | 36.2001.76 | VALVE | KIT 123 | 6 |
| 7 | 94.7376.00 | SPRING DIA 9,4 X 14,8 | KIT 123 | 6 |
| 8 | 36.2025.51 | VALVE GUIDE | KIT 123 | 6 |
| 9 | 90.3847.00 | O - RING DIA 20,24 X 2,62 | KIT 124 | 6 |
| 10 | 98.2226.00 | CAP M 24 X 1,5 X 17 | KIT 124 | 6 |
| 11 | 36.7115.01 | VALVE UNIT | KIT 123 | 6 |
| 12 | 99.1807.00 | SCREW M6 X 10 UNI 5739 | | 8 |
| 13 | 50.1500.74 | CRANKCASE COVER | | 2 |
| 14 | 44.2118.01 | SPACER INDICATOR | | 1 |
| 15 | 90.4097.00 | O - RING DIA 55,56 X 3,53 | | 1 |
| 16 | 91.8328.00 | BALL BEARING - 6305 | | 2 |
| 17 | 90.1614.00 | OIL SEAL DIA 20 X 30 X 5 | KIT 23 | 3 |
| 18 | 44.0100.22 | CRANKCASE | | 1 |
| 19 | 98.2103.00 | OIL DIPSTICK G3/8 | | 1 |
| 20 | | SEE REF. 66 | | |
| 21 | 91.4892.00 | KEY | | 3 |
| 22 | 44.0500.66 | PISTON GUIDE | | 3 |
| 23 | 44.0300.22 | CONNECTING ROD | | 3 |
| 24 | 90.3920.00 | O - RING DIA 101,27X 2,62 | | 1 |
| 25 | 44.1600.22 | CRANKCASE COVER | | 1 |
| 26 | 99.1837.00 | O-RING | | 1 |
| 27 | 90.3585.00 | O - RING DIA 10,82 X 1,78 | | 1 |
| 28 | 98.2041.00 | CAP G ¼ X 9 | | 1 |
| 29 | 97.7340.00 | PISTON PIN DIA 10 X 29,5 | | 3 |
| 30 | 96.7350.00 | WASHER DIA 16 X 27 | | 3 |
| 31 | 90.5022.00 | ANTI-EXTRUSION RING | | 3 |
| 32 | 90.3572.00 | O - RING DIA 5,28 X 1,78 | | 3 |

| POS | REF | DESCRIPTION | KIT NO | QTY |
|-----|------------|----------------------------|---------------------|-----|
| 33 | 44.0401.09 | PISTON DIA 18 | | 3 |
| 34 | 96.7008.00 | WASHER DIA 8 | | 3 |
| 35 | 92.2216.00 | NUT M8 - STAINLESS STEEL | | 3 |
| 36 | 90.1641.00 | OIL SEAL DIA 25 X 62 X10 | | 1 |
| 37 | 50.2000.74 | PUMP MOUNTING FEET | | 2 |
| 38 | 96.7016.00 | WASHER DIA 8 UNI 1751 | | 4 |
| 39 | 99.3037.00 | SCREW M8 X 16 UNI 5739 | | 4 |
| 40 | 90.3612.00 | O - RING DIA 31,47 X 1,78 | KIT 125-126-130-131 | 3 |
| 41 | 44.0801.70 | PACKING RETAINER DIA 18 | KIT 126-131 | 3 |
| 42 | 44.2161.70 | INTERMEDIATE RING DIA 18 | KIT 128-131 | 3 |
| 43 | 90.2683.00 | BACKING SEAL DIA 18 | KIT 127-131 | 3 |
| 44 | 90.2682.00 | PACKING DIA 18 H.P SEAL | KIT 127-131 | 3 |
| 45 | 44.1001.51 | HEAD RING DIA 18 | KIT 129-131 | 3 |
| 46 | 98.2100.00 | CAP G 3/8 X 13 | | 1 |
| 47 | 98.2176.00 | CAP G 1/2 X 10 | | 1 |
| 48 | 96.7380.00 | WASHER DIA 17,5 X 23 X 1,5 | | 1 |
| 49 | 96.7514.00 | WASHER DIA 21,5 X 27 X 1,5 | | 1 |
| 50 | 98.1966.00 | CAP G 1/8 X 8 | | 1 |
| 51 | 90.2684.00 | LOW PRESSURE SEAL 18 | KIT 127-131 | 3 |
| 65 | 90.0635.00 | CRANKCASE CIRCLIP | | 1 |
| 66 | 44.0213.65 | CRANKSHAFT W112,W140 | | 1 |
| 66 | 44.0215.65 | CRANKSHAFT W154 | | 1 |
| 67 | 91.8568.00 | NEEDLE BEARING | | 1 |
| 68 | 99.3067.00 | SCREW M8 X 25 UNI 5739 | | 4 |
| 69 | 96.7014.00 | WASHER DIA 8 | | 4 |
| 70 | 10.0494.22 | MOTOR FLANGE | | 1 |
| 71 | 90.1690.00 | OIL SEAL 45 X 62 X 8 | | 1 |
| 72 | 96.6938.00 | WASHER DIA 6 | | 4 |
| 73 | 99.1912.00 | SCREW M6 X 30 UNI 5931 | | 4 |
| 74 | 90.4097.00 | O - RING 55,56 X 3,53 | | 1 |

SERVICE REPAIR KITS AVAILABLE:

| Ø18 W112 W140 W154 | KIT NO POSITIONS INCLUDED | KIT 126 | KIT 127 | KIT 128 | KIT 129 | KIT 131 | KIT NO POSITIONS INCLUDED | KIT 23 | KIT 123 | KIT 124 |
|-----------------------------|------------------------------|---------|----------|---------|---------|----------------------------|------------------------------|--------|-------------------|---------|
| | | 40-41 | 43-44-51 | 42 | 45 | 40-41-42 43-44-45 51 | | 17 | 4-5-6 7-8 (11) | 9-10 |
| | No pcs. | 3 | 3 | 3 | 6 | 1 | No pcs. | 3 | 6 | 6 |