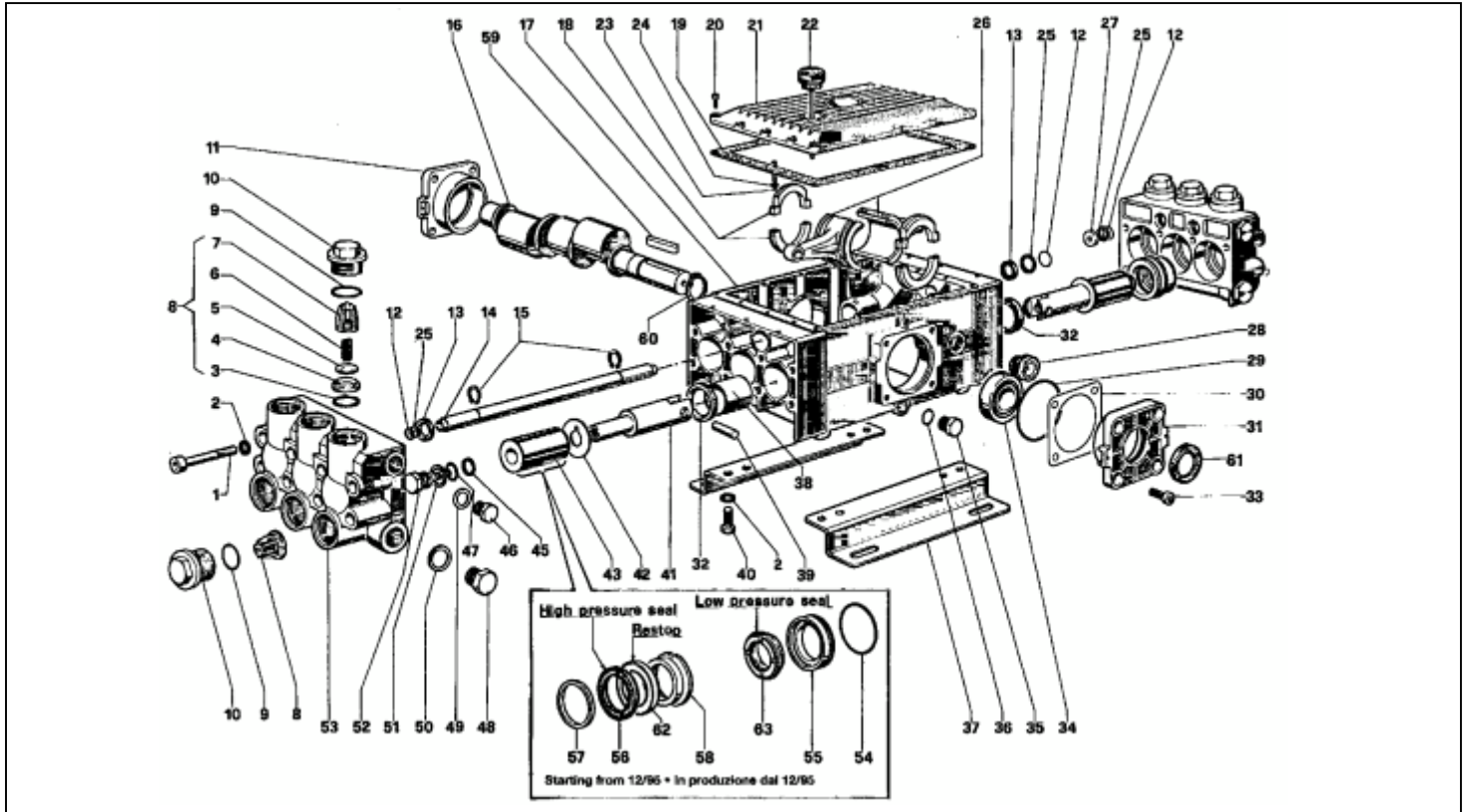


W12-W15



POS	REF	DESCRIPTION	KIT NO	QTY
1	99.4418.00	SCREW M12 X 90 UNI5931		16
2	96.7195.00	WASHER DIA 12		20
3	90.4059.00	O-RING 32,93X3,53. SPEC	KIT 43	12
4	36.2011.66	VALVE SEAT	KIT 43	12
5	36.2010.76	VALVE	KIT 43	12
6	94.7450.00	SPRING DIA 16,7X27,5	KIT 43	12
7	36.2009.51	VALVE GUIDE	KIT 43	12
8	36.7065.01	VALVE UNIT	KIT 43	12
9	90.4065.00	O-RING DIA 37,69X3,53	KIT 43	12
10	98.2420.00	CAP M42X1,5X23		12
11	76.1501.22	CRANKCASE COVER		1
12	90.3835.00	O-RING DIA 15,08X2,62		4
13	90.1614.00	OIL SEAL DIA 20X30X5		4
14	77.2122.93	BALANCE TUBE		1
15	90.0605.00	CIRCLIP CRANKSHAFT		2
16	76.0210.35	CRANKSHAFT P. DI.F W15		1
16	76.0211.35	CRANKSHAFT P. DI.F W12		1
17	77.0100.22	CRANKCASE		1
18	77.2120.01	RETAINING RING		6
19	77.2118.84	GASKET COVER		1
20	99.1867.00	SCREW M6X18 UNI 5931		16
21	77.2114.22	CRANKCASE COVER		1
22	98.2272.00	OIL DIPSTICK		1
23	99.1927.00	SCREW M6X35 UNI 5931		12
24	96.6938.00	WASHER DIA 6,4		12
25	90.5091.00	ANTI-EXTRUSION RING		4
26	77.0302.41	CON-ROD		3
27	77.2203.70	SEALING PLUG		2
28	97.5968.00	OIL SIGHT GLASS		1
29	90.4141.00	O-RING DIA 85,32X3,53		2
30	76.2200.78	SPACER		2
31	77.0500.22	CRANKCASE COVER		1

POS	REF	DESCRIPTION	KIT NO	QTY
32	90.1670.00	OIL SEAL DIA 35X52X7	KIT 44	6
33	99.3652.00	SCREW M10X20 UNI 5931		8
34	91.8474.00	BALL BEARING		2
35	98.2100.00	CAP G 3/8X13		1
36	90.3833.00	O-RING DIA 13,95X2,62		1
37	76.2000.74	FOOT		2
38	90.9174.00	SHIM DIA 35X39X50		6
39	97.7400.00	PISTON PIN DIA 14X34,5		6
40	99.4266.00	SCREW M12X25 UNI 5739		4
41	77.0500.54	PISTON GUIDE		6
42	96.7568.00	WASHER DIA 22,3X51X0,5		6
43	76.0402.09	PISTON DIA 45		6
45	90.5107.00	ANTI-EXTRUSION RING	KIT 74	6
46	98.2265.00	CAP G 3/4X16		3
47	90.3841.00	O-RING 17,13X2,62	KIT 74	6
48	98.2325.00	CAP G 1/17		2
49	96.7700.00	WASHER DIA 26,5X32X1,5		3
50	96.7870.00	WASHER DIA 33,5X38X1,5		2
51	96.7555.00	WASHER DIA 22X27X0,5	KIT 74	6
52	69.2195.66	PISTON SCREW	KIT 74	6
53	77.1200.41	MANIFOLD OT 58 BRASS		2
54	90.3903.00	O-RING DIA 60X2,62	KIT 47-80	6
55	76.0802.70	PACKING RETAINER DIA 45	KIT 47-80	6
56	90.2850.00	PACKING DIA 45 H.P SEAL	KIT 79-80	6
57	76.1002.51	HEAD RING DIA 45	KIT 48-80	6
58	76.2170.70	INTERMEDIATE RING DIA 45	KIT 80-81	6
59	91.4978.00	KEY		1
60	90.0695.00	CRANKSHAFT CIRCLIP		1
61	90.1672.00	OIL SEAL DIA 35X52X8	KIT 32	1
62	90.2848.00	RESTOP DIA 45	KIT 79-80-81	6
63	90.2855.00	PACKING DIA 45 L.P SEAL	KIT 79-80	6

SERVICE REPAIR KITS AVAILABLE:

KIT NO	KIT 32	KIT 43	KIT 44	KIT 47	KIT 48	KIT 74	KIT 79	KIT 80	KIT 81
POSITIONS INCLUDED	61	3-4-5 6-7-(8)	32	54-55	57	45-47 51-52	56-62 63	54-55 56-57 58-62 63	58-62
N. PCS	2	6	3	3	6	3	3	1	3