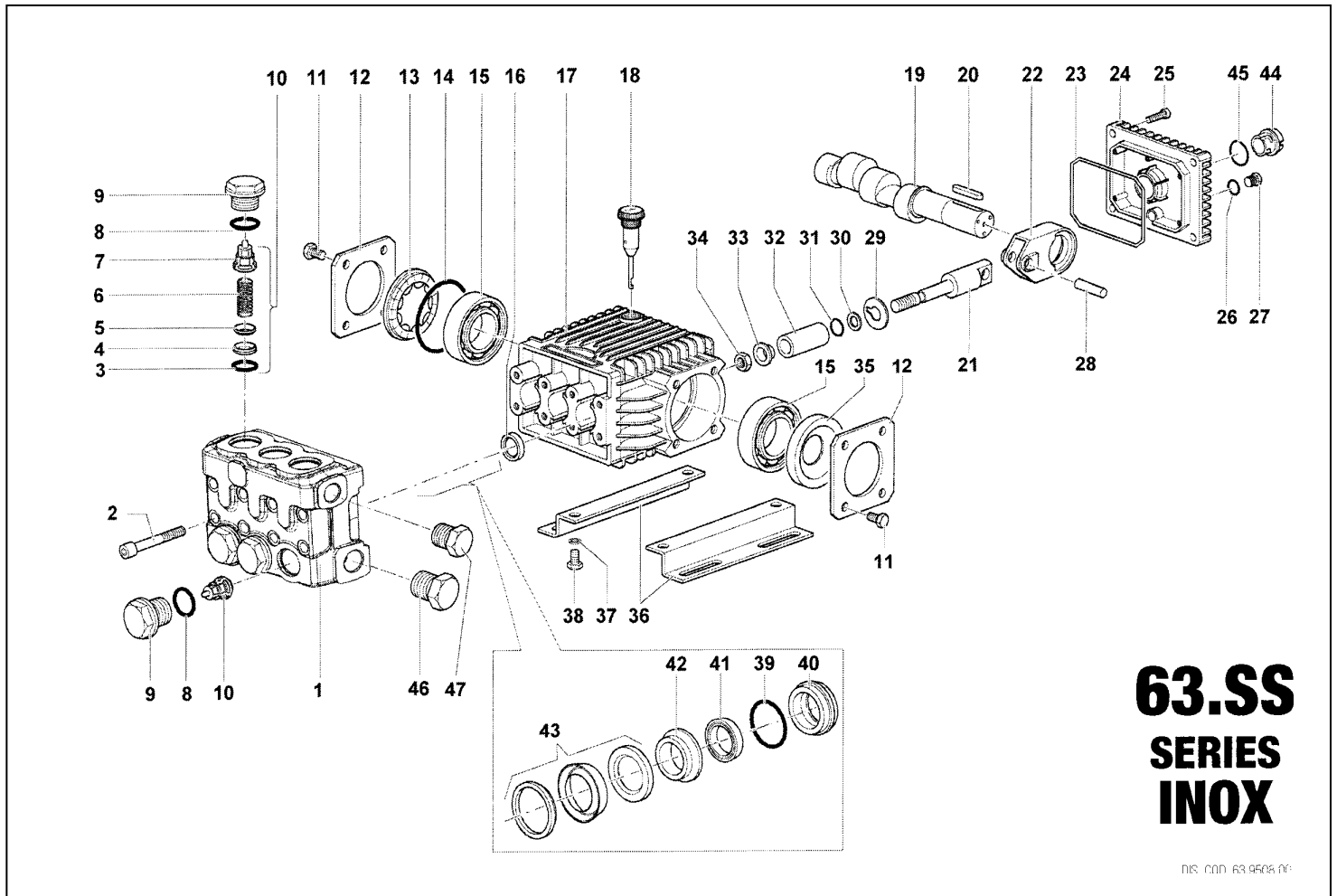


SSE1507 – SSE1509 – SSE1411 – SSE1413



DES. COD. 63.9508.06

P	REF	DESCRIPTION	KIT NO	QTY
1	63.1216.36	MANIFOLD Ø15		1
1	63.1219.36	MANIFOLD Ø 18		1
2	99.3193.00	SCREW M8x65		8
3	90.3841.00	O RING Ø 17,3 x 2,62	KIT192	6
4	36.2036.66	VALVE SEAT SS	KIT192	6
5	36.2001.76	VALVE	KIT192	6
6	94.7373.00	SPRING Ø 9,4 X 14,8 SS	KIT192	6
7	36.2025.51	VALVE GUIDE	KIT192	6
8	90.3847.00	O RING Ø 20,24 x 2,62		6
9	98.2229.00	CAP M 24, x 1,5 x 17		6
10	36.7130.01	VALVE UNIT SS	KIT192	6
11	99.1808.00	SCREW M 6 x 10		8
12	63.1500.76	CRANKCASE COVER		2
13	44.2218.01	SPACER		1
14	90.4097.00	O RING Ø 55,56 x 3,53		1
15	91.8331.00	BEARING		2
16	90.1595.00	OIL SEAL Ø 18 x 26 x 6	KIT159	3
17	63.0100.22	CEANKCASE		1
18	98.2103.00	OIL DIPSTICK		1
19	63.0212.65	SEL1507-SEL1411-SEL1509-SEL1413		1
19	63.0216.65	SEL1509-SEL1413-SEL1511-SEL1415		1
20	91.4892.00	KEY		1
21	63.0501.66	PISTON GUIDE SS		3
22	63.0300.22	CONECTING ROD		3
23	90.3920.00	O RING Ø 101,27 x 2,62		1
24	63.1600.22	CRANKCASE COVER		1
25	99.1838.00	SCREW M 6 x 14		4

POS	REF	DESCRIPTION	KIT NO	QTY
26	90.3585.00	O RING Ø 10,82 x 1,78		1
27	98.2040.00	CAP ¼ x 9		1
28	97.7335.00	PISTON PIN		3
29	96.7076.00	WASHER Ø 9 x 25 x 0,5		3
30	90.5022.00	RING Ø 6,2x9x1,5		3
31	90.3573.00	O RING Ø5,28x1,78		3
32	52.0400.09	PISTON Ø 15		3
32	44.0401.09	PISTON Ø 18		3
33	63.2115.66	WASHER Ø 8		3
34	92.2215.00	NUT M 8		3
35	90.1641.00	OIL SEAL Ø 25x62x10		1
36	50.0200.74	FOOT		2
37	96.7016.00	WASHER Ø 8,4 UNI 1751		4
38	99.3037.00	SREW M 8x16		4
39	90.3608.00	O RING Ø 28,30x1,78		3
40	63.0804.66	PACKING RETAINER Ø 15		3
40	63.0805.66	PACKING RETAINER Ø 18		3
41	90.2607.00	LOW PRESSURE SEAL Ø 15	KIT193	3
41	90.2649.00	LOW PRESSURE SEAL Ø 18	KIT194	3
42	63.2162.66	INTERMEDIATE RING Ø 15		3
42	63.2163.66	INTERMEDIATE RING Ø 18		3
43	90.2612.00	HIGH PRESSURE SEAL Ø 15	KIT193	3
43	90.2654.00	HIGH PRESSURE SEAL Ø 18	KIT194	3
44	63.2100.51	OIL LEVEL INDICATOR		1
45	90.4051.00	O RING Ø 26,58x3,53		1
46	98.2180.00	CAP 1/2x10		1
47	98.2100.66	CAP 3/8x13		1

SERVICE REPAIR KITS AVAILABLE:

KIT NO	KIT159	KIT 192
POSITIONS INCLUDED	16	3-4-5-6-7(10)
No pcs.	3	6

Ø15	KIT NO	KIT 193
SSE1507 SSE1509	POSITIONS INCLUDED	41-43
	No pcs.	3

Ø18	KIT NO	KIT 194
SSE1411 SSE1413	POSITIONS INCLUDED	41-43
	No pcs.	3