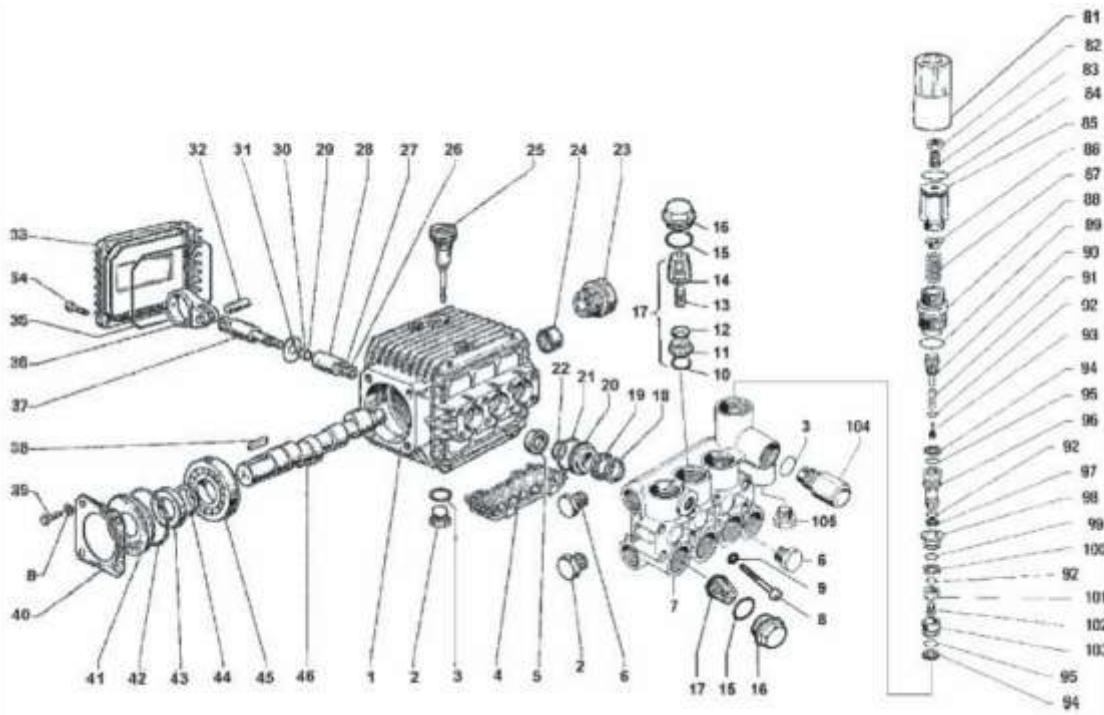


# FE5101 - FE5102 - FE5104 - FE5108



POS	REF	DESCRIPTION	KIT NO	QTY
1	51.0106.22	CRANKCASE		1
2	98.2100.00	CAP G3/8 x 13		2
3	90.3833.00	O-RING Ø 13,95 x 2,62		2
4	51.2090.51	PROTECTION		1
5	90.1565.00	OIL SEAL	KIT 83	3
6	98.2041.00	CAP G1/4 x 9		2
7	51.1201.41	MANIFOLD OT 58 - Ø 15		1
7	51.1205.41	MANIFOLD OT 58 - Ø 18		1
8	99.1943.00	SCREW M 6x40 UNI 5931		8
9	96.6938.00	WASHER Ø 6,4		8
10	90.3841.00	O-RING Ø 17,13 x 2,62	KIT 123	6
11	36.2003.66	VALVE SEAT	KIT 123	6
12	36.2001.76	VALVE	KIT 123	6
13	94.7376.00	SPRING Ø 9,4 x 14,8	KIT 123	6
14	36.2025.51	VALVE GUIDE	KIT 123	6
15	90.3847.00	O-RING Ø 20,24 x 2,62	KIT 157	6
16	98.2216.00	CAP M24 x 1,5 x 11,2	KIT 157	6
17	36.7115.01	VALVE UNIT	KIT 123	6
18	51.1000.51	HEAD RING Ø 15	KIT96-97	3
18	51.1001.51	HEAD RING Ø 18	KIT 140-141	3
19	90.2620.00	PACKING Ø 15	KIT96-97	3
19	90.2681.00	PACKING Ø 18	KIT 140-141	3
20	51.0800.70	PACKING RETAINER Ø 15	KIT 86-96	3
20	51.0803.70	PACKING RETAINER Ø 18	KIT 139-140	3
21	90.3604.00	O-RING Ø 25,12 x 1,78	KIT 86-96-97-139-140-141	3
22	90.3835.00	O-RING Ø 15,08 x 2,62 - Ø 15	KIT 86-96-97	3
22	90.3843.00	O-RING Ø 17,8 x 2,62 - Ø 18	KIT 139-140-141	3
23	97.5968.00	OIL LEVEL INDICATOR		1
24	91.8014.00	BEARING		1
25	98.2103.00	OIL DIPSTICK G3/8		1
26	92.2216.00	NUT M8 SS		3
27	96.7008.00	WASHER Ø 8		3
28	51.0400.09	PISTON Ø 15		3
28	51.0400.10	PISTON Ø 18		3
29	90.3572.00	O-RING Ø 5,28 x 1,78		3
30	90.5022.00	ANTI EXTRUSION RING		3
31	96.7070.00	WASHER 8		3
32	97.7310.00	PISTON PIN		3
33	51.1600.22	INSPECTION COVER		1
34	99.1867.00	SCREW M6 x 18 UNI 5931		4

POS	REF	DESCRIPTION	KIT NO	QTY
35	90.3917.00	O-RING Ø 88,57 x 2,62		1
36	51.0301.22	CONNECTING ROD		3
37	51.0500.56	PISTON GUIDE		3
38	91.4878.00	KEY		1
39	99.1807.00	SCREW M6 x 10 UNI 5739		4
40	50.1500.74	CRANKCASE PLATE		1
41	50.2115.51	SPACER		1
42	90.4097.00	O-RING Ø 55,56 x 3,53		1
43	90.1634.00	OIL SEAL Ø 25 x 42 x 7		1
44	90.0635.00	CIRCLIP		1
45	91.8328.00	BALL BEARING 6305		1
46	51.0200.65	CRANKSHAFT FE5104		1
46	51.0201.65	CRANKSHAFT FE5108		1
46	51.0220.65	CRANKSHAFT FE5101 - FE5102		1
81	36.3187.51	KNOB		1
82	92.2218.00	NUT M8 x 20 UNI 5589		1
83	99.3054.00	SCREW M8 x 20 UNI 5923		1
84	90.3598.00	O-RING		1
85	36.3185.70	CONTROL VALVE KNOB		1
86	36.3169.70	SPRING PLATE		1
87	94.7436.00	SPRING Ø 15 x 35		1
88	36.3184.70	GUIDE BUSHING	KIT 102	1
89	90.3847.00	O-RING Ø 20,24 x 2,62	KIT 102	1
90	36.3188.70	STROKE STOPPER	KIT 102	1
91	94.7332.00	SPRING Ø 6,1 x 19	KIT 102	1
92	90.3575.00	O-RING Ø 6,75 x 1,78 - Spec.	KIT 102	3
93	36.3331.51	SHUTTER	KIT 102	1
94	90.5065.00	ANTI EXTRUSION	KIT 102	2
95	90.3822.00	O-RING 9,92 x 2,62	KIT 102	2
96	36.3189.70	CONTROL PISTON	KIT 102	1
97	90.5025.00	ANTI EXTRUSION RING	KIT 102	1
98	36.3165.70	VALVE GUIDE	KIT 102	1
99	90.3589.00	O-RING Ø 12,42 x 1,78	KIT 102	1
100	90.5075.00	ANTI EXTRUSION RING	KIT 102	1
101	36.3190.66	SPHERICAL VALVE	KIT 102	1
102	99.1509.00	SCREW M5 x 0,8 x 7,5	KIT 102	1
103	36.3164.66	VALVE SEAT	KIT 102	1
104	10.0078.70	NIPPLE G3/8 Ø 3		1
105	98.2057.00	TAP M14 x 1,5		1

## REPAIR KITS

KIT NO	KIT 83	KIT 102	KIT 123	KIT 157
POS	5	88-89-90-91-92 93-94-95-96-97 98-99-100-101 102-103	10-11-12 13-14 (17)	15-16
NO PCS.	3	1-3	6	6

PISTON Ø 15 FE5101 - FE5104		
KIT 86	KIT 96	KIT 97
20-21-22	18-19-20 21-22	18-19 21-22
3	1	3

PISTON Ø 18 FE5102 - FE5108		
KIT 139	KIT 140	KIT 141
20-21-22	18-19-20 21-22	18-19 21-22
3	1	3