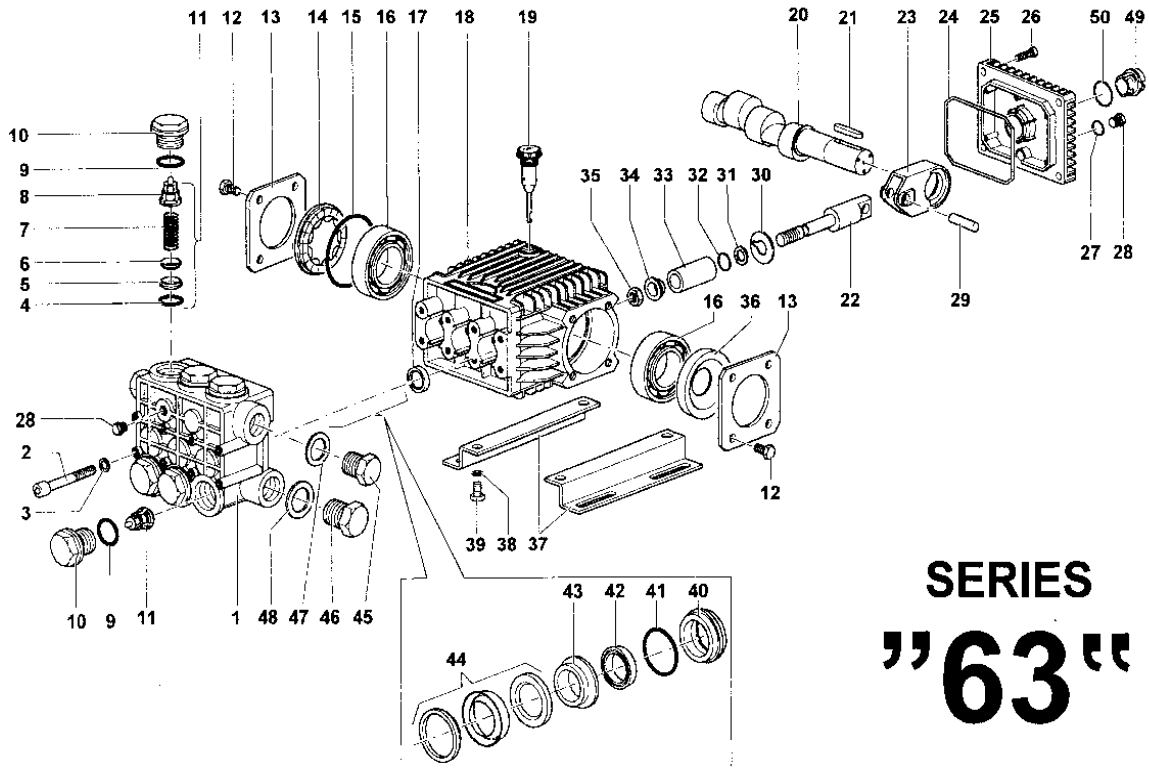


EL2007M-EL2009M-EL1411M-EL1413M-EH2011M-EH1413M-EH1416M-EL1714M



SERIES
"63"

POS	REF	DESCRIPTION	KIT NO	QTY
1	63.1200.41	MANIFOLD (PISTON Ø 15		1
1	63.1203.41	MANIFOLD (PISTON Ø 18		1
2	99.3192.00	SCREW M8x65		8
3	96.7014.00	WASHER		8
4	90.3841.00	O'RING 17,13x2,62	KIT123	6
5	36.2003.66	VALVE SEAT	KIT123	6
6	36.2001.76	VALVE	KIT123	6
7	94.7376.00	SPRING Ø 9,4x14,8	KIT123	6
8	36.2025.51	VALVE GUIDE	KIT123	6
9	90.3847.00	O,RING Ø20,24x2,62	KIT124	6
10	98.2226.00	CAP	KIT124	6
11	36.7115.01	VALVE UNIT	KIT123	6
12	99.1807.00	SCREW M6x10		8
13	50.1500.74	CRANKCASE COVER		2
14	44.2118.01	DISTANCE INDICATOR		1
15	90.4097.00	O,RING Ø 55,56x3,53		1
16	91.8328.00	BALL BEARING		2
17	90.1595.00	OIL SEAL Ø18x26x6	KIT159	3
18	63.0100.22	CRANKCASE		1
19	98.2103.00	OIL DIPSTICK		1
20	63.0202.65	CRANKSHAFT,UH2008		1
20	63.0205.65	CRANKSHAFT,EH2009,UH2011		1
20	63.0208.65	CRANKSHAFT,EH2011,UH2013		1
20	63.0212.65	CRANKSHAFT,EL2007,EL1411,UL2009,UL1413,EL1413,UH2016		1
20	63.0216.65	CRANKSHAFT,EL2009,EL1413,UL2011,U1415,EH1416		1
21	91.4892.00	KEY		1
22	63.0500.66	PISTON GUIDE		3
23	63.0300.22	CONNECTING ROD		3
24	90.3920.00	O,RINGØ101,27x2,62		1
25	63.1600.22	CRANKCASE COVER		1

POS	REF	DESCRIPTION	KIT NO	QTY
26	99.1837.00	SREW M6x14		4
27	90.3585.00	O'RING Ø 10,28x1,78		1
28	98.2041.00	CAP		2
29	97.7335.00	PISTON PIN		3
30	96.7075.00	WASHER Ø9x25x0,5		3
31	90.5022.00	ANTI EXTRUSION RING		3
32	90.3573.00	O'RING 5,28x1,78		3
33	52.0400.09	PISTON Ø 15		3
33	44.0401.09	PISTON Ø 18		3
34	44.2115.70	COLLAR WASHER Ø8		3
35	92.2216.00	NUT M8		3
36	90.1641.00	OIL SEAL Ø 25x62x10		1
37	50.2000.74	FOOT		2
38	96.7016.00	WASHER Ø8		4
39	99.3037.00	SCREW 8x16		4
40	63.0800.70	PACKING RETAINER Ø15	KIT162-166	3
40	63.0801.70	PACKING RETAINER Ø 18	KIT163-167	3
41	90.3608.00	O'RING Ø 28,3 x 1,78	KIT166-167	3
42	90.2608.00	LOW PRESSURE SEAL Ø 15	KIT160-166	3
42	90.2650.00	LOW PRESSURE SEAL Ø 18	KIT161-167	3
43	63.2160.70	INTERMEDIATE RING Ø 15	KIT164-166	3
43	63.2161.70	INTERMEDIATE RING Ø 18	KIT165-167	3
44	90.2612.00	PACKING Ø 15 HIGH PRES. SEAL	KIT160-166	3
44	90.2654.00	PACKING Ø 18 HIGH PRES. SEAL	KIT161-167	3
45	98.2100.00	CAP 3/8x13		1
46	98.2176.00	CAP 1/2x10		1
47	96.7380.00	WASHER Ø 17,5 x 23x 1,5		1
48	96.7514.00	WASHER Ø 21,5x27x1,5		1
49	63.2100.51	OIL LEVEL INDICATOR		1
50	90.4051.00	O,RING 26,58x3,53		1

SERVICE REPAIR KITS AVAILABLE:

KIT NO	KIT 124	KIT 159	KIT 123
POSITIONS INCLUDED	9-10	17	4-5-6 7-8(11)
N. PCS	6	3	6

Ø15	KIT NO	KIT 160	KIT 162	KIT 164	KIT 166
EL2007 EL2009 EH2011 EH1413 EH1416	POSITIONS INCLUDED	45	44-47-56	43	40-41-42 43-44
	No pcs.	6	3	3	1
Ø18	KIT NO	KIT 161	KIT 163	KIT165	KIT 167
EL1411 EL1413 EL1714	POSITIONS INCLUDED	42-44	40	43	40-41 42-43 44
	No pcs.	3	3	3	1