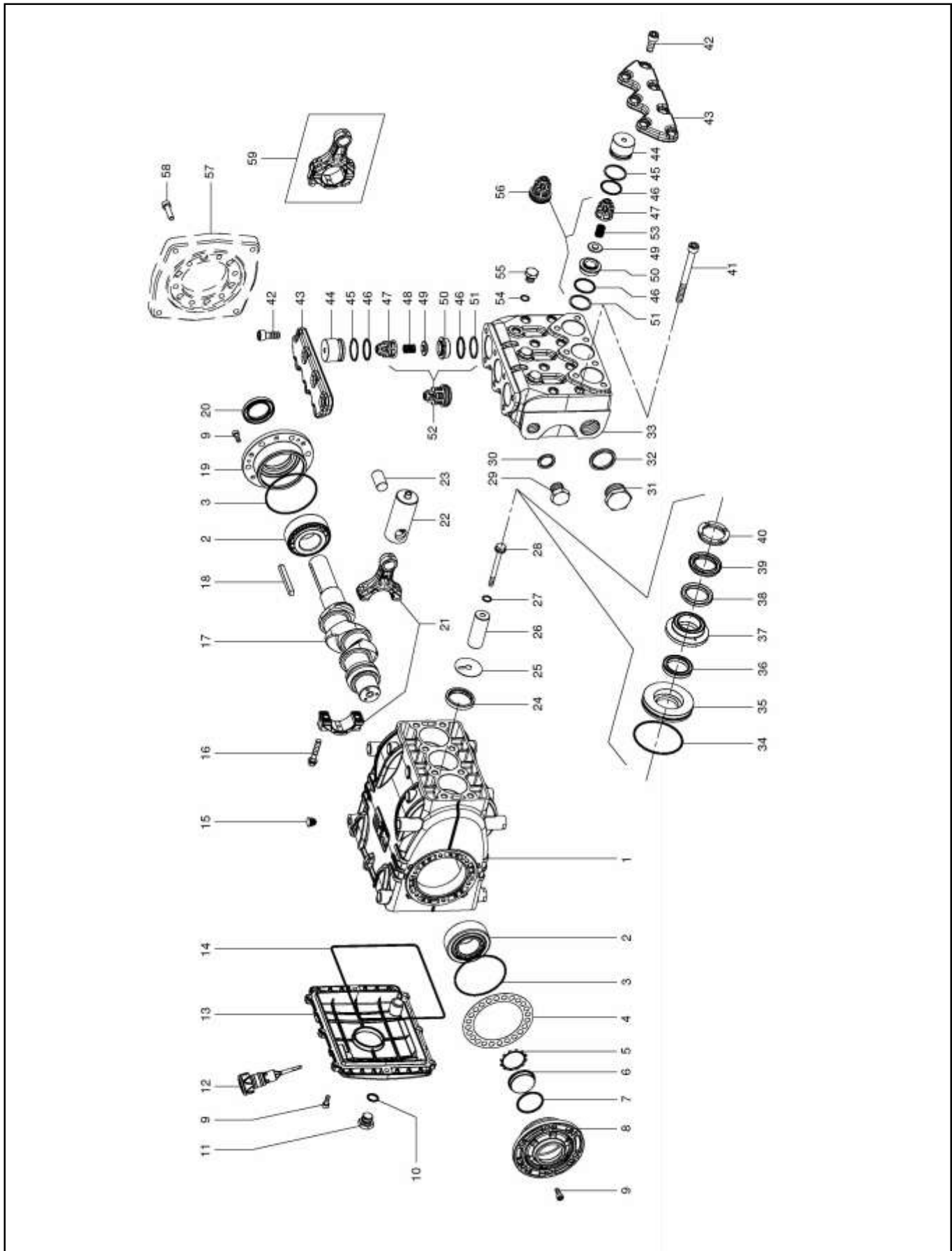


17. EXPLODED VIEW AND PART LIST



POS.	CODE CODICE	DESCRIPTION DESCRIZIONE	N. PCS.
1	70010022	Pump crankcase	1
2	91847700	Roller bearing 33207/Q	2
3	90391500	O-Ring D. 80,6x2,62	2
	70220081	Shim 0,1	
4	70220381	Shim,25	
	70220581	Shim 0,35	
5	90075600	Ring ZJ45	1
6	70211801	Oil level indicator	1
7	90387700	O-Ring D. 39,34x2,62	1
8	70150122	Oil level indicator side bearing cover	1
9	99185400	Screw TCEI M6x16 UNI 5931	20
10	90383300	O-Ring D. 13,95x2,62	1
11	98209900	Plug G3/8"	1
12	98211500	Dipstick	1
13	70160022	Crankcase cover	1
14	90394400	O-Ring D. 196,52x2,62	1
15	98200500	Plug for D.15 port	7
16	99312300	Connecting rod screw	6
17	70020035	Crankshaft	1
18	91490000	Crankshaft key	1
19	70150022	Motor side bearing cover	1
20	90166800	Oil seal 35x52x7 Spec.	1
21	70030043	Connecting rod	3
22	70050015	Piston guide	3
23	97742000	Pin D.18x36	3
24	90167700	Seal 36x47x7	3
25	96709900	Wiper	3
	70040009	Plunger KE20	3
	70040109	Plunger KE22	3
26	70040209	Plunger KE24	3
	70040309	Plunger KE28	3
	70040409	Plunger KE30	3
27	90367100	O-Ring D. 11x2 Spec.	3
28	70219566	Plunger bolt	3
29	98218200	Plug G1/2"x18	1
30	93197200	Washer D.1/2"	1
31	98232600	Plug G1"x17	1
32	93198500	Washer D.1"	1
	70120036	Manifold D.20	1
33	70120136	Manifold D.22-24	1
	70120236	Manifold D.28-30	1
34	90362600	OR D. 50,52x1,78 KIT 2002-3-4-5-6-7-8-9-10-11	3
	70080070	Packing retainer D.20 KIT 2003	3
	70080170	Packing retainer D.22 KIT 2005	3
35	70080270	Packing retainer D.24 KIT 2007	3
	70080370	Packing retainer D.28 KIT 2009	3
	70080470	Packing retainer D.30 KIT 2011	3

POS.	CODE CODICE	DESCRIPTION DESCRIZIONE	N. PCS.
	90268800	Packing D.20 L.P. KIT 2002-2003	3
	90271300	Packing D.22 L.P. KIT 2004-2005	3
36	90273700	Packing D.24 L.P. KIT 2006-2007	3
	90275000	Packing D.28 L.P. KIT 2008-2009	3
	90276000	Packing D.30 L.P. KIT 2010-2011	3
	70216070	Middle ring D.20 KIT 2003	3
	70216170	Middle ring D.22 KIT 2005	3
37	70216270	Middle ring D.24 KIT 2007	3
	70216370	Middle ring D.28 KIT 2009	3
	70216470	Middle ring D.30 KIT 2011	3
	90270400	Restop ring D.20 KIT 2002-2003	3
	90273000	Restop ring D.22 KIT 2004-2005	3
38	90274300	Restop ring D.24 KIT 2006-2007	3
	90275500	Restop ring D.28 KIT 2008-2009	3
	90277400	Restop ring D.30 KIT 2010-2011	3
	90270500	Packing D.20 H.P. KIT 2002-2003	3
	90272500	Packing D.22 H.P. KIT 2004-2005	3
39	90274500	Packing D.24 H.P. KIT 2006-2007	3
	90275800	Packing D.28 H.P. KIT 2008-2009	3
	90277000	Packing D.30 H.P. KIT 2010-2011	3
	70100051	Front ring D.20 KIT 2003	3
	70100151	Front ring D.22 KIT 2005	3
40	70100251	Front ring D.24 KIT 2007	3
	70100351	Front ring D.28 KIT 2009	3
	70100451	Front ring D.30 KIT 2011	3
41	99381600	Screw TCEI M10x110 UNI 5931	8
42	99367100	Screw TCEI M10x25 UNI 5931 Spec.	14
43	70210036	Valve cover	2
44	70211570	Valve plug	6
45	90518000	Back up ring D. 32,4x36,5x1,5	6
46	90386500	O-Ring D. 29,82x2,62 KIT 2000-2001	12
47	36204051	Suction/delivery valve guide KIT 2000-2001	6
48	94740100	Delivery valve spring KIT 2001	3
49	36203966	Suction/delivery valve plate KIT 2000-2001	6
50	36203866	Suction/delivery valve seat KIT 2000-2001	6
51	90517800	Back up ring D. 31x35,5x1,5 KIT 2000-2001	6
52	36713401	Delivery valve assembly KIT 2001	3
53	94739700	Suction valve spring KIT 2000	3
54	90358500	O-Ring D. 10,82x1,78	3
55	98204700	Plug G1/4"x13	3
56	36713301	Suction valve assembly KIT 2000	3
57	10067320	Hydraulic motor flange	1
58	99308400	Screw TCEI M8x30 UNI 5931	6
59	70030001	Connecting rod (complete)	3